

Double Queen or King Standard

Large room has two queen or one king pillow-top beds and a television; log furniture throughout & a coffee maker. Rates start at \$89-159/nightly



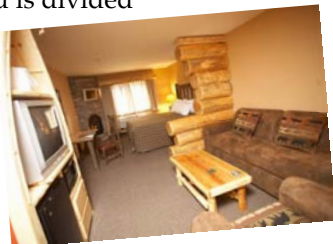
Double Queen Suite

Sleeping area of the room has two queen pillow-top beds and a television. Furnishings also include a sleeper sofa. Room is equipped with a coffee maker, microwave, and refrigerator and is divided by a partial wall. Rates start at \$99-169/nightly



King Fireplace Suite

Sleeping area of the room has one king pillow-top bed, fireplace, and television. Furnishings also include a sleeper sofa. Room is equipped with a coffee maker, microwave, and refrigerator and is divided by a partial wall. Rates start at \$109-179/nightly



Genuine Up North Hospitality

- 54 Lodge Style Rooms & Suites
- Complimentary Continental Breakfast
- 7,300 square feet of Banquet/ Meeting space
- Host groups from 5-350
- Indoor Pool, Kiddie Pool & Oversized Hot tub
- "The Gold Mine" Arcade Room
- "Whitefish Wares" Gift Shop
- In Room High Speed Internet
- Use of Anytime Fitness located across the street in Town Square
- Picnic Area with Grills
- Cable TV
- Campfires
- Snowshoes available for guest
- Whitefish Catering
- Located on the 11th Hole of Crosswoods Golf Course



King Whirlpool Suite

Sleeping area of the room has one king pillow-top bed, fireplace and television. Furnishings also include a sleeper sofa, desk, television and Jacuzzi tub. Room is equipped with a coffee maker, microwave, and refrigerator. Rates start at \$119-189/nightly



Queen Whirlpool Fireplace Suite

Sleeping area of the room has one Queen pillow-top bed, fireplace, television and Jacuzzi tub. Living room area has a sleeper sofa, desk and television. Room is equipped with a coffee maker, microwave, and refrigerator. Rates starting at \$119-189/nightly



King Kiddy Suite

The Kid's suite is divided by a semi-private log wall with two open windows and open entry door, giving them a feeling of being in their own private cabin! The suite is decorated with a full wall mural, television and pillow-top bunk beds. The main room has one king size pillow-top bed and television. The Suite also features a sofa sleeper, easy chair, television, coffee maker, microwave, and refrigerator.

Rates start at \$119-
\$189/nightly



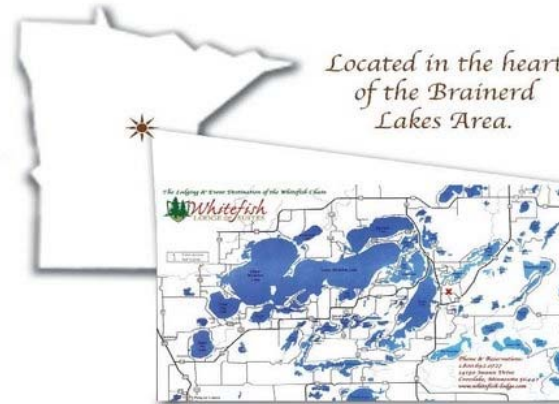
King Whirlpool Theatre Suite

Large three room suite featuring a home theater room with 50" plasma television, built-in surround sound system, theater couch seating, as well as a DVD player, master bedroom with one king size pillow-top bed and television, and Living Room with Jacuzzi tub, television, and a sleeper sofa. Furnishings include table and chairs, coffee maker, microwave, and refrigerator.

Rates start at \$169-\$229/nightly



In beautiful Crosslake, MN



For more information:

Please call (800)692-0727

Or visit our website:

www.whitefish-lodge.com

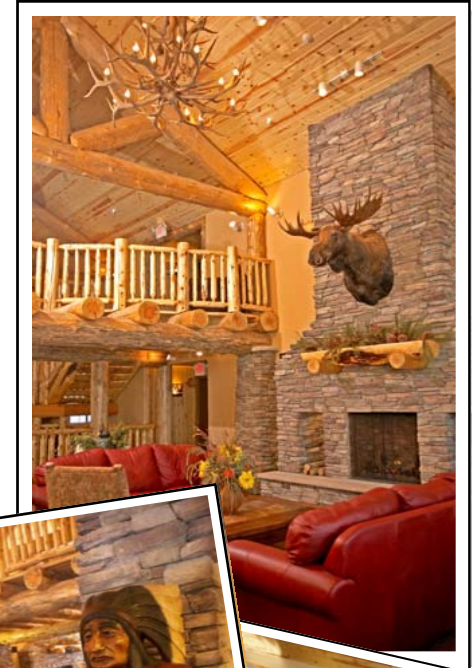


14150 Swann Drive

Crosslake, MN 56442



whitefish-lodge.com



(800)692-0727
Crosslake, MN